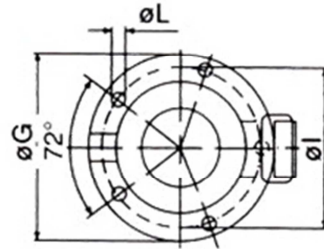
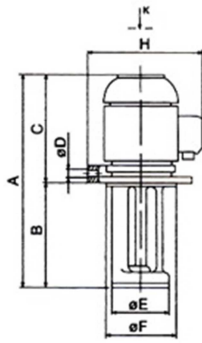


Pompe SACEMI - Type SPV



Pompe machine-outil triphasée 220/380V

| Réf. ABE | kW | A | B | C | D | E | F | G | H | I | L |
|---------------|------|-----|-----|-----|------|----|-----|-----|-----|-----|---|
| POMP.SP12A090 | | 255 | 90 | | | | | | | | |
| POMP.SP12A120 | | 285 | 120 | | | | | | | | |
| POMP.SP12A170 | 0,15 | 335 | 170 | 170 | 3/4" | 98 | 100 | 130 | 151 | 115 | 7 |
| POMP.SP12A220 | | 385 | 220 | | | | | | | | |
| POMP.SP12A270 | | 435 | 270 | | | | | | | | |
| POMP.SP12A350 | | 515 | 350 | | | | | | | | |
| POMP.SP18B090 | | 255 | 90 | | | | | | | | |
| POMP.SP18B120 | | 285 | 120 | | | | | | | | |
| POMP.SP18B170 | 0,16 | 335 | 170 | 170 | 3/4" | 98 | 100 | 130 | 151 | 115 | 7 |
| POMP.SP18B220 | | 385 | 220 | | | | | | | | |
| POMP.SP18B270 | | 435 | 270 | | | | | | | | |
| POMP.SP18B350 | | 515 | 350 | | | | | | | | |
| POMP.SP25-090 | | 300 | 90 | | | | | | | | |
| POMP.SP25-120 | | 330 | 120 | | | | | | | | |
| POMP.SP25-170 | 0,30 | 380 | 170 | 215 | 3/4" | 98 | 100 | 130 | 170 | 115 | 7 |
| POMP.SP25-220 | | 430 | 220 | | | | | | | | |
| POMP.SP25-270 | | 480 | 270 | | | | | | | | |
| POMP.SP25-350 | | 560 | 350 | | | | | | | | |
| POMP.SP33-090 | | 300 | 90 | | | | | | | | |
| POMP.SP33-120 | | 330 | 120 | | | | | | | | |
| POMP.SP33-170 | 0,40 | 380 | 170 | 215 | 3/4" | 98 | 100 | 130 | 170 | 115 | 7 |
| POMP.SP33-220 | | 430 | 220 | | | | | | | | |
| POMP.SP33-270 | | 480 | 270 | | | | | | | | |
| POMP.SP33-350 | | 560 | 350 | | | | | | | | |

